

BLA EXHIBIT
SECS. 23 & 26, T. 19 N., R. 17 E., W.M.

N 89°50'55" W
 1303.00'

N 25°55'08" W
 275.00'

N 01°28'58" W
 238.64'

372.70'

134.06'

S 19°22'22" W
 276.00'

S 17°13'38" E
 149.52'

SHEDS

DRIVEWAY

WATER
 TANK

PROPOSED BOUNDARY

BUILDING

SPIGOT

20.00 AC

TPN 647734

1200.13'

EXISTING BOUNDARY

12.56 AC

TPN 687834

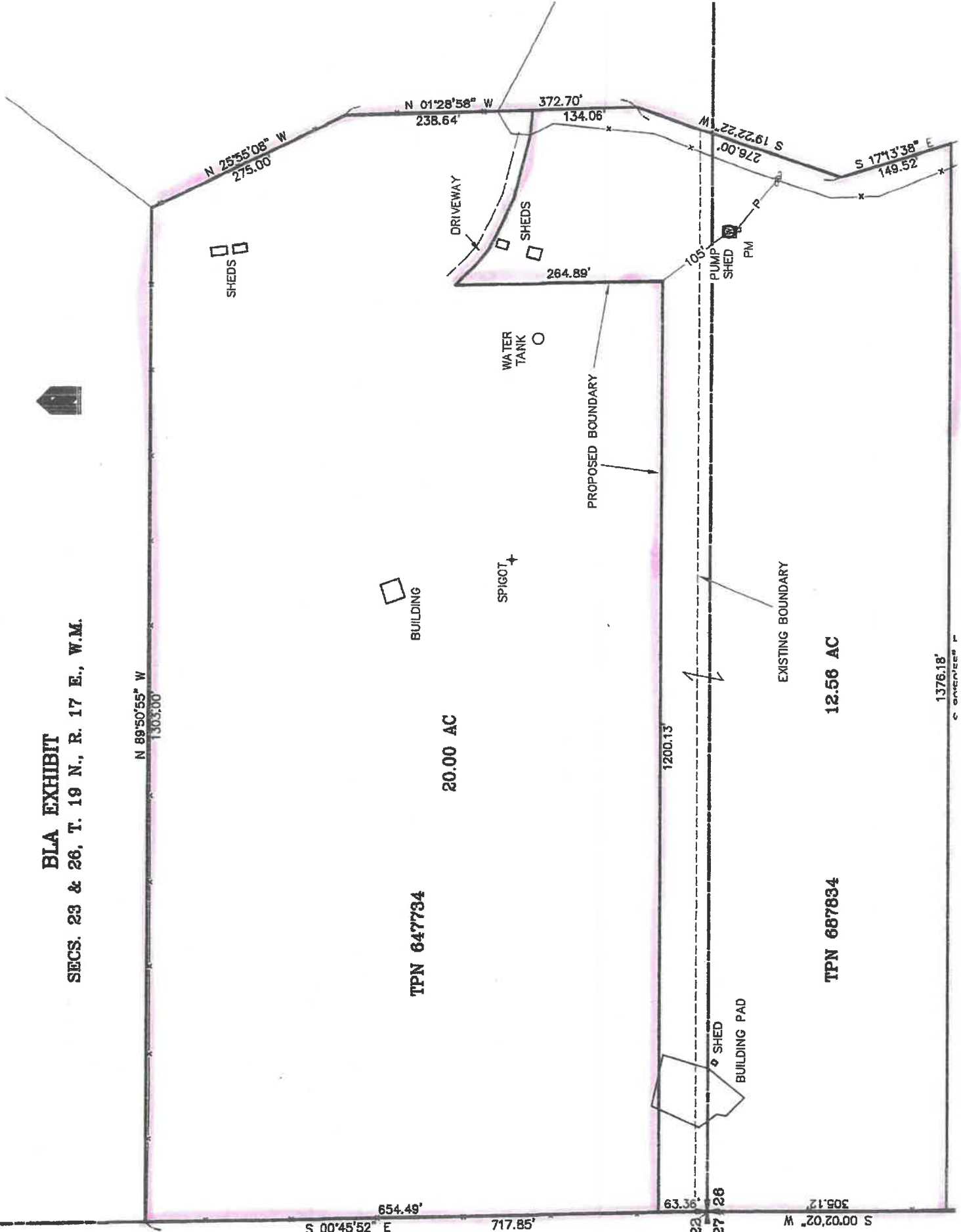
SHED
 BUILDING PAD

63.36'
 27.26'

S 00°45'52" E
 654.49'
 717.85'

M 20.20.00 S
 305.12'

1376.18'
 C ORANGE P



BLA EXHIBIT
SECS. 23 & 26, T. 19 N., R. 17 E., W.M.

N 89°50'55" W
 1303.00'

N 25°55'08" W
 275.00'

N 01°28'58" W
 238.64'

372.70'

134.06'

S 19°22'22" W
 276.00'

S 17°13'38" E
 149.52'

SHEDS

DRIVEWAY

SHEDS

264.89'

WATER
 TANK

PROPOSED BOUNDARY

SPIGOT

BUILDING

20.00 AC

TPN 647734

1200.13'

EXISTING BOUNDARY

12.56 AC

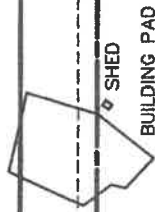
TPN 687834

1376.18'

C. ONEY/SEE P

PUMP
 SHED

PM



SHED
 BUILDING PAD

654.49'

S 00°45'52" E

717.85'

63.36'

27' 26"

S 00°02'02" W
 305.12'